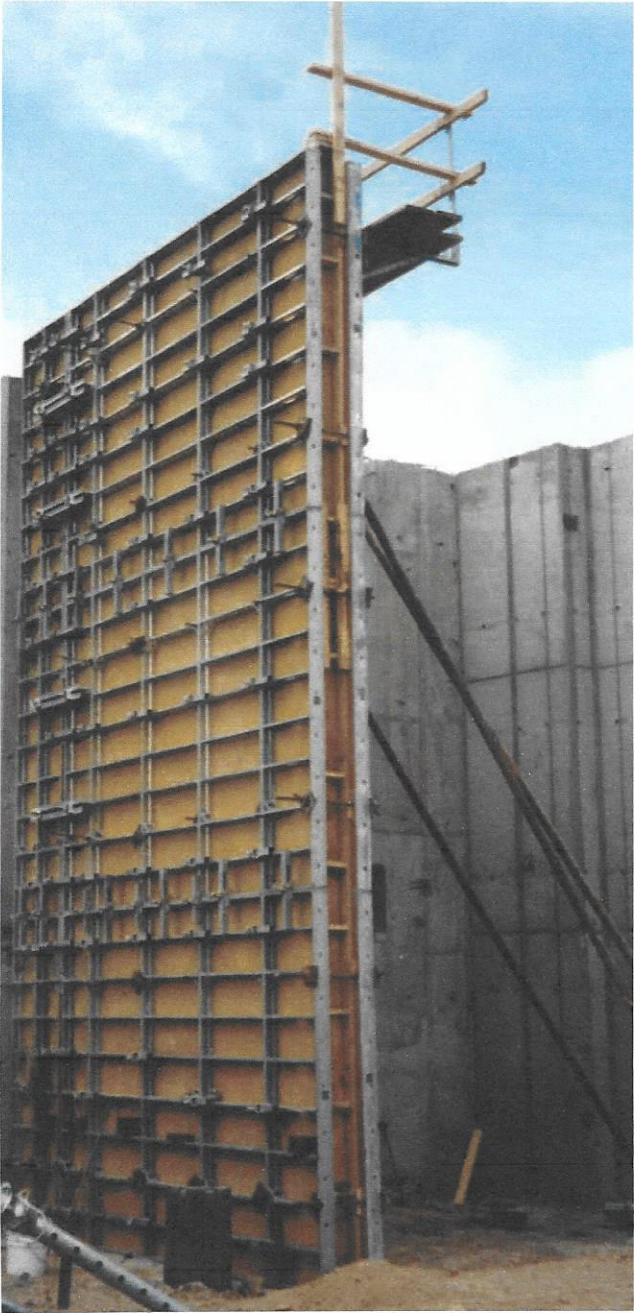


DESUTA

CONCRETE FORMS

RASTO

CLAMP FORM SYSTEM





The RASTO concrete forming system is a modular design suitable in handset or gangform applications.

Modular versatility

Panels come in 23 different sizes and can be combined vertically or horizontally to create almost any dimension. A full line of accessories and hardware makes configuring gangs and setting details quick and simple.

Adjustable and strongback clamps eliminate the need for walers even when moving large gangs. At an average weight of 6.5lbs/sqft, this is one of the best weight/pressure ratios in the industry.



System strength

RASTO panels are manufactured with rust resistant hot-dipped galvanized or dip painted steel frames. The form face is a 1/2" HDO and/or Russian Birch plywood to provide a high quality concrete finish.

Panels, clamps and ties are designed to withstand 60 kN/m² (1250 psf) of concrete pressure.

Clamps

The panel clamp is a light weight, inexpensive clamp which connects panels at the vertical joints.

While needing only a small spud wrench to tighten, it is faster and more reliable than hammer driven wedge clamps.



RASTO panels are clamped together to create almost any wall or column dimension. They can also be stepped to accommodate uneven footing or slab elevations.

Panel sizes

RASTO panels come in heights of 270 cm and 150m (9'-10" to 4'-11" nominal). Widths from 90 cm to 30 cm (36" to 12")

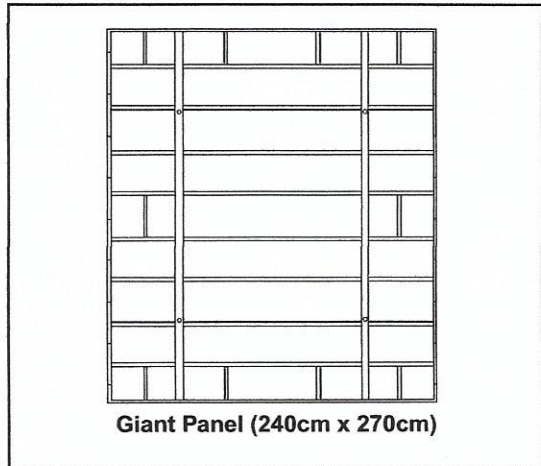
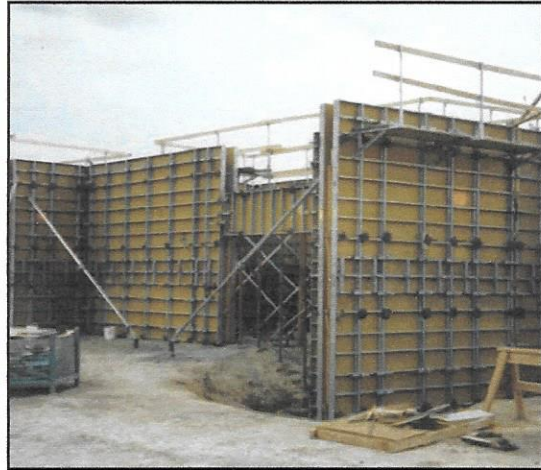
Gangform productivity

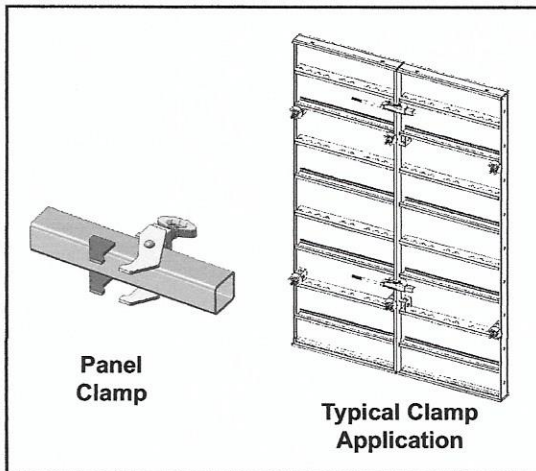
Giant Panels are available for forming large walls. Their 240 cm wide and 270 cm high (7'-10" x 8'-10") size makes creating large gangs very fast, and reduces the materials required. This large panel option is a great way to boost productivity!

Handset capability

The 270 cm x 75 cm (8'-10" x 2'-6") panel and smaller sizes are also frequently utilized in handset applications. The panels quickly clamp together to create one of the fastest setting handset systems.

The 270 cm x 75 cm (8'-10" x 2'-6") panel weighs only 153lbs and can also be moved by two men. These panels are "ganged" by hand and then set in place by crane, minimizing the amount of crane time needed for gang forming.





Panel Clamp

In one operation, the panel clamp aligns panels and clamps them into position with flush, tight joints. It straddles the panel cross-members to provide vertical alignment and eliminates the need for walers in most common applications.

Adjustable Clamp

The Adjustable Clamp spans fliers up to 15 cm (6") wide and is also utilized at horizontal joints for up to 23' tall gangs.

StrongBack Clamp

The Strongback Clamp quickly stiffens and aligns tall FormRight gangs with stacking panels. A Strongback End Clamp attaches to the Strongback Clamp for tall "face up" gang assembly.

Outer Corner Clamp

The Outer Corner Clamp connects two panels to form a 90° outside corner.

Nuts and Bolts

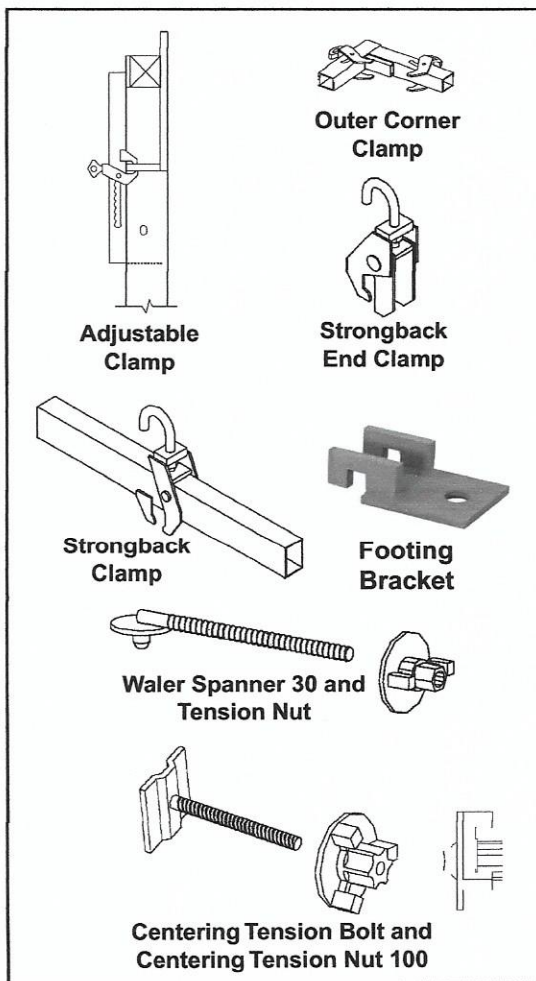
The Centering Tension Bolt distributes loads evenly across the RASTO profile. The Centering Tension Bolt Nut 100 centers itself evenly in the RASTO profile. They connect panels to hinged corners, mounting bulkheads and other applications RASTO is used with.

Waler Spanner

The Waler Spanner (30) with the Waler Spanner Tension Bolt connect Multi-Purpose Walers and Adjustment Walers to panels.

Footing Bracket

The footing bracket is used to anchor forms to help secure, align, and prevent uplift.



Most RASTO corners are formed using standard RASTO panels, Inside Corner Panels and Panel Clamps. Other components provide additional form layout options that create an adaptable, productive system.

Inside Corner

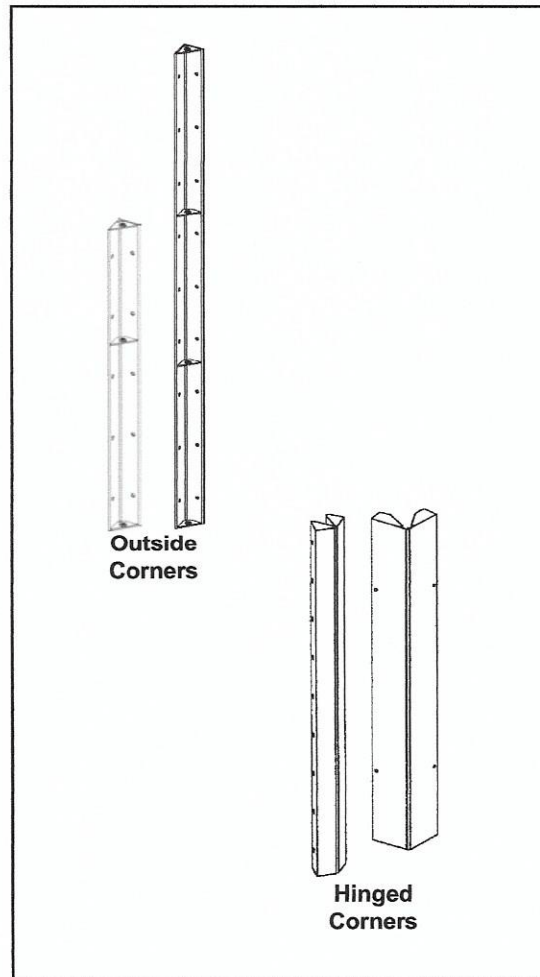
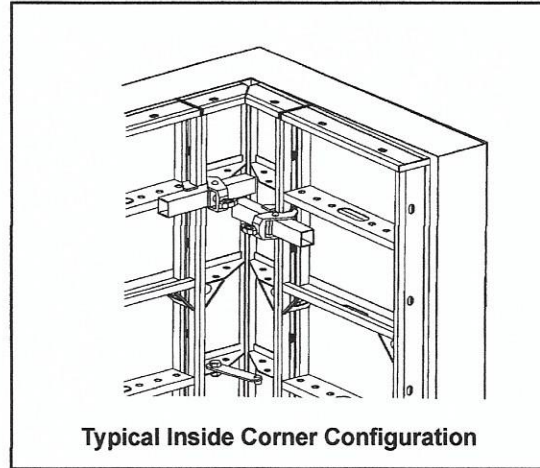
The 30 cm (12" nom.) wide Inside Corner is available in 150 cm, 270 cm and 300 cm heights. Unlatching the stiffener flexes the corner, allowing it to be reduced by approximately 2 degrees to aid stripping.

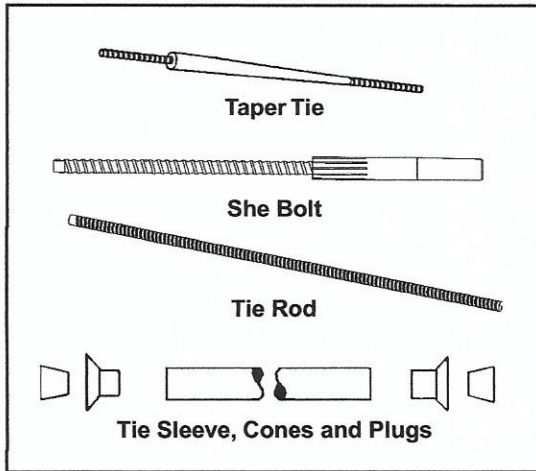
Outside Corners

Outside Corners are attached to panels with Accessory Bolts and Centering Nuts.

Hinged Corners

The 15 cm (6" nom.) wide Hinged Corner creates corner angles of 90° to 300°. The 30 cm (12" nom.) wide Hinged Corner forms corner angles from 60° to 150°. Both are available in 150 cm, 270 cm and 300 cm (4'-11", 8'-10" and 9'-10") heights.





RASTO panel design includes reinforced tie holding bays located next to the edge profiles. If a tie is not inserted in a holding bay, a Panel Plug is inserted to fill the tie hole. One tie nut typically supports adjacent panels.

Taper Ties

Taper Ties are 15 mm ($\frac{5}{8}$ " diameter) and come in lengths to accommodate wall thickness up to 36". The same size standard Tie Nut is used on both ends of the Taper Tie to simplify hardware needs.

She Bolts

These reusable outer tie units are used with a cut-to-size $\frac{5}{8}$ " inner unit and standard Tie Nuts.

Tie Rods

The reusable Tie Rods are available in 6" increments and are used in combination with Sleeves and Cones. Sleeves are cut-to-length and Cones are added to ensure the proper spacing between the two erected forming faces. Tie Sleeve Plugs close the openings left in the wall.

Tie Holding Clip

The Tie Holding Clip holds the Tie Rod away from the form in "dry tie" applications (i.e.: top ties and bulkheads).

Tie Nuts

The Swivel Tie Nut (85) pivots up to 10° for battered walls and other applications. It includes a swivel bearing plate. The standard Tie Nut does not pivot, but is used in most applications.

Frame Tie Plate

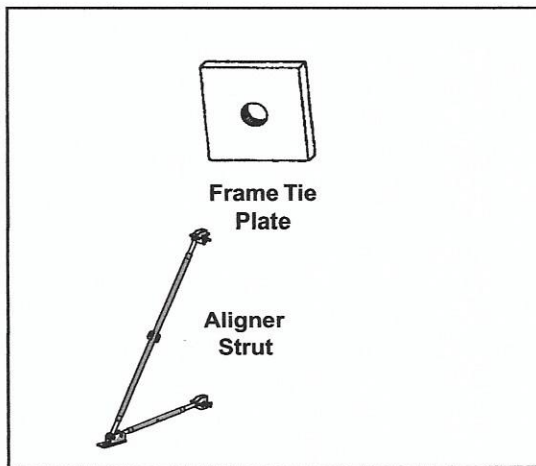
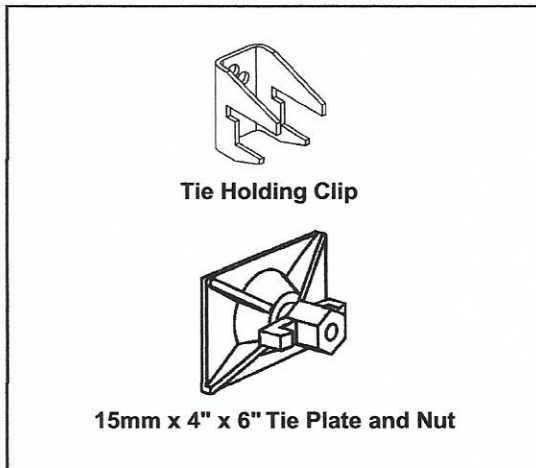
The Frame Tie Plate is used at panel corners to cover the joint where all four corners meet

Pipe Braces

Different size pipe braces are available ranging from as little as 5' to as much as 39'.

Scaffold Brackets

Scaffold brackets with easy connection points and walk plank that meets OSHA standards is available.



Walers

Two Hinged Waler 170s are required to form a complete hinged waler assembly for non-rectangular corners. Each Hinged Waler 170 includes a Pivot Pin.

An Adjustment Waler 120 provides length adjustments and is typically used for creating bulkheads.

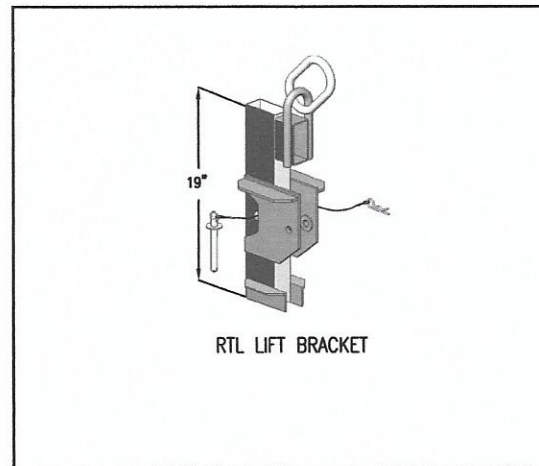
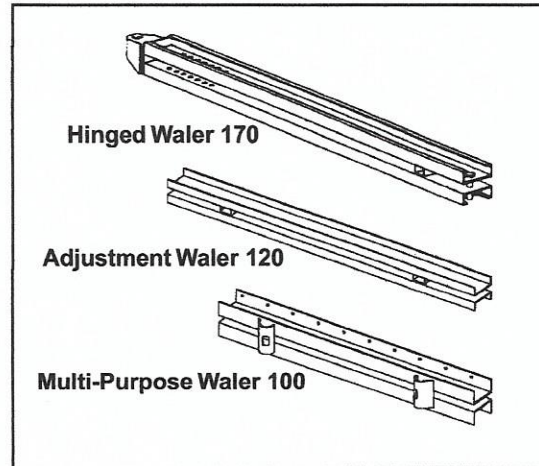
The Multi-Purpose Waler 100 is used like the Adjustment Waler 120, and can be used to create tension resistant filler alignment. It also features holes for nailing.

RASTO Lift Brackets

The RTL Lift Bracket has a maximum load capacity of 2,000 at a 4:1 safety rating. A minimum of two lift brackets are required to lift a gang of up to 265 sqft.

Note: The actual total area will depend on the total weight of the panels and hardware.

Caution: The angle for the attached lifting lines must be greater than or equal to 60 degrees from horizontal. If they are less than 60 degrees, or if more than two brackets are used, a spreader beam must be used.



RASTO

CLAMP FORM SYSTEM

120 Fisher Road #200
Portersville, PA 16051 USA
724-368-3230 • FAX 724-368-3728

WWW.DESUTACONCRETEFORMS.COM

Intangible benefits of choosing RASTO from Desuta Concrete Forms.

LOCALLY STOCKED

Located along the I79 corridor in Western PA. We are the closest gang forming system available for this region. This greatly reduces freight cost and improves service availability for any additional materials needed.

WELL MAINTAINED

Every effort is taken to ensure clamps and hardware is in working condition when it arrives on the job. We maintain our forms with good plywood faces and are continually renovating/upgrading our rental fleet.

ENGINEERING AND FIELD SERVICE

When renting RASTO from DCF we strive to produce the most accurate and thoughtful layout drawings possible in the quickest amount of time for contractors to review.

We also have knowledgeable field service available when it makes sense to lend a hand on the job site.

STRAIGHT FORWARD BILLING

DCF is a company that strives to bill projects exactly as agreed upon at time of acceptance.

We are also very fair and reasonable during the closeout process.

Handling "paperwork" from deliveries to returns and then final billing will help exceed the contractors experience in using the RASTO Clamp System.

